



Disposable devices - Emergency - Diagnostics

Authorised retailer

Summary

■ Disposable devices	4
■ Emergency	6
■ Diagnostics	10

Disposable devices

Bcode[®]

Find on-line info on this category right now just by shooting this code



A selection of versatile and convenient disposable devices. Designed for hospital and domestic use.



◆ MNO11102

Orthodontic brace container

Made of plastic, available in various colors.



◆ MNO11101

Prostheses container

Made of plastic with filter.



◆ MNO11107A

Daily pill box 6 compartments

Made of plastic, practical and pocket-sized.



◆ MNO11107B

Weekly pill box 4 compartments

Made of plastic with 7 small removable containers, one for each day of the week, divided in 4 dedicated compartments (morning, afternoon, evening, night).



◆ MNO11107C

Weekly pill box 7 compartments

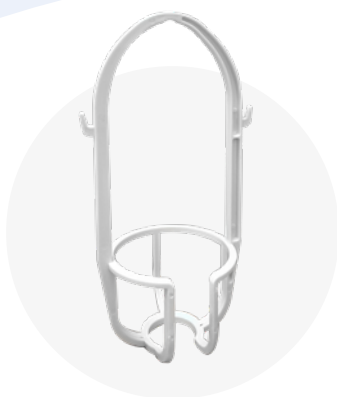
Made of plastic with 7 compartments each equipped with label for each day of the week.



◆ MNO11103

Tourniquet

Available in latex with hem or latex free.



❖ MNO11104

Drip holder

With shockproof plastic basket, to be attached to drip holder rods or hooks, for infusion bottles. Reusable product.



❖ MNO11106

Identification bracelets

Made of plastic for mothers and babies, pink and blue.



❖ MNO11109

Autoclavable urine bed pan

Made of polypropylene, 800 ml, with perforated handle which allows total release of liquids, washing water or substances used for sterilization, individually packaged.



❖ MNO11108

Male urinal

Made of neutral polyethylene, 1000 ml, graduated, individually packaged. Available in the following versions:

MN011108A - in plastic in bag
MN011108B - with cap in bag
MN011108C - in plastic in case



❖ MNO11110

Female urinal

Made of neutral polyethylene, 750 ml, graduated, individually packaged. Available in the following versions:

MN011110A - in plastic in bag
MN011110B - in plastic in case



❖ MNO11115

Closed circuit urine bag

Latex free, with anti-reflux valve, tube cm 120, cross tap, 2000 ml, sterile.

Emergency

B^{code}

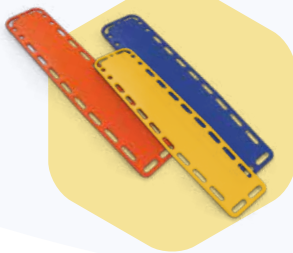
Find on-line info on this category right now just by shooting this code



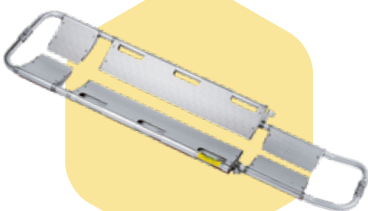
Line of specific products for emergency interventions.



→ Transport, evacuation, relocation



→ Traumatic patient management



→ Non-traumatic rescue



→ Basic Life Supports



→ Collars

Designed for
both
**hospital
and home use.**

EMO11219

Assisted go up stair sedan chair with armrests

200	15	AL
 Kg	 Kg	

With stair crawler device which allows the chair to rest on three steps, giving extraordinary safety during the descent with the patient seated, while during flat transport, the wheels also ensure high comfort and maneuverability. It is among the lightest on the market; the inclination of the backrest, and its entire configuration ensure a perfect weight distribution, relieving operators' efforts.

Folding footrest with magnetic locking and innovative biomechanical solutions, complete the features of this rescue item.



Technical features

LxAxP: 55x101x81 cm
Max length: 139 cm
Folded thickness: 29 cm
Weight: 15 kg
Capacity: 200 kg
Material: Aluminum

The version with brake on the rear wheels is also available, as an option.

EMO11205

Atraumatic spoon stretcher gray anodized

170	10	AL
 Kg	 Kg	

Thanks to its characteristics, performs an important rescue function as it can be positioned directly under the patient without the need to lift, allows moreover a perfect immobilization of the patient during transport.

- Effective coupling and release device for division of the stretcher
- Adjustable length with automatic locking
- Bag with n. 3 quick release belts for immobilization of the patient
- Easy storage in the ambulance while folded
- Entirely built in sturdy and light aluminum
- A stretcher case is available on request.



Kit of belts included

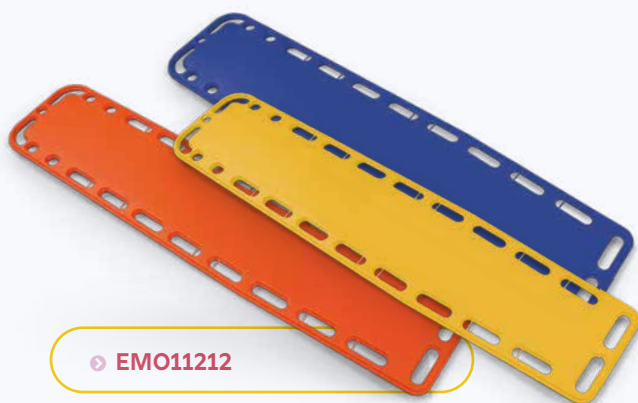
Technical features

Height: 7 cm
Width: 42 cm
Length: 167 cm
Max length: 202 cm
Folded length: 120 cm
Folded thickness: 9 cm
Weight: 10 kg
Capacity: 170 kg



Open stretcher

Folded stretcher



◉ EMO11212

Adult spinal board

183x41	150	5,5	ABS
cm	Kg	Kg	

Spinal board made with high resistance plastic material. It was designed with particular attention to difficulties that operators can face during the daily interventions; 4 slots for fast and total fixing of the head immobilizer have been created indeed, and 2 grooves in the support part, in case of block of the base in the traditional way, which allow the hook and loop straps not to break during use and accommodation in the ambulance. Equipped with 20 carrying handles and provided with 3 quick release belts. It is translucent to X-rays and can be supplied in 3 different colors.

Technical features

Size: Adult
Width: 41 cm
Length: 183 cm
Thickness: 5 cm
Weight: 5,5 kg
Capacity: 150 kg



◉ EMO11216

Immobilizing belts for spinal board

This harness system allows to completely immobilize the patient. Thanks to the sliding transverse belts and the locks in Velcro can be easily used on any spine board and for all patients. Spinal board not included.

To be used on adult spinal boards



◉ EMO11213

Pediatric spinal board

125x41	100	3,7	ABS
cm	Kg	Kg	

Designed for the immobilization and transport of children up to 120 cm, made of high resistance plastic material and studied paying attention to the problems operators must face during the daily interventions: they have been provided of 4 slots for fast and total fixing of the head immobilizer indeed, and 2 grooves in the support part, in case of block of the base in the traditional way, which allow the hook and loop straps not to break during use and accommodation in the ambulance. It is equipped with 10 carrying handles. Its translucent composition allows preliminary diagnostics with X-rays and can be supplied in 3 different. Standard model is not provided with belts.

Technical features

Size: Children
Width: 41 cm
Length: 125 cm
Thickness: 5 cm
Weight: 3,7 kg
Capacity: 100 kg



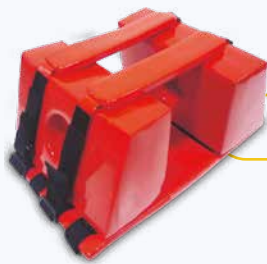
◉ EMO11217

Immobilizing belts for pediatric spinal board

Belt system that allows you to completely immobilize the pediatric patient on the table. Thanks to the sliding transverse belts and the hook and loop fasteners it can be easily adjusted to all patients. Spinal board not included.

To be used on children spinal boards





◉ EMO11214

Standard head immobilizer for spinal board

Standard head immobilizer for spinal board

Technical features

Dimensions: 40,5 x 25,5 x 16,5 (h) cm

To be used on adult spinal boards



◉ CLO1907

Adjustable Cervical collar



For the safe and stable immobilization of the cervical spine. Ready-to-use, intuitive single-valve, easy to apply thanks to the adjustable Velcro closure. Made of high-density polyethylene, perfectly supports the weight of the head, wrapping, with its anatomical shape the occipital and mandibular area reducing to minimum flexion-extension, minimizing pressure on the carotid artery ensuring compatibility with RX, CT and MRI investigations. A large opening on the front part allows easier access to carotid pulse control or in case of a possible tracheotomy. It has been designed with an innovative “multiple size” system: one collar covers 4 sizes (Low, Short, Regular, Tall) in the adult version and n. 4 sizes in the pediatric version, by simply adjusting the height of the collar. The adjustment method is quick and intuitive thanks to an oval-colored indicator with corresponding locking buttons.

Available in 2 sizes

CLO1907A - Adults

CLO1907B - Pediatric



◉ EMO11215

Padded pediatric head immobilizer

Padded head immobilizer for pediatric spinal board, made of cells of expanded material and covered with an exclusive vinyl system.

Technical features

Dimensions: 38 x 25 x 15 (h) cm

To be used on children spinal boards



◉ EMO11208

Silicone resuscitator bag



Complete autoclavable transparent with overpressure valve, equipped with connection to the cylinder, fitting for reservoir coupling and connections to masks.

Available in 3 different sizes:

EMO11208A - Adults 1500 ml

EMO11208P - Pediatric 500 ml

EMO11208N - Newborn 250 ml

Diagnostics

DIAGNOSTICS

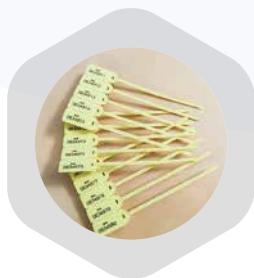
A selection of Diagnostic devices: reliable and granted made of high-quality technical materials.

B^{code}

Find on-line info on this category right now just by shooting this code



→ Oximeter



→ Security seal



→ Suction units

Designed for
**hospital
facilities
and home care.**



Vital Test

Handheld pulse oximeter
complete with adult sensor

🔗 DG011304

Vital Test is simple and professional, it can be used in intensive care units, hospital wards, dentist's surgeries, emergency rooms, since it guarantees immediate, accurate and non-invasive monitoring. Vital Test has an ergonomic and likable shape, it is easy to grip and to be transported. Vital Test allows SpO2 measurement, heart rate, waveform visualization and the last 10 minutes trend value of these two parameters. Supplied with rechargeable battery.

Technical features

Width: 7cm

Height: 15,8 cm

Depth: 3,7 cm

Weight: 0,25 kg

Warranty: 2 years



Security seal

🔗 DG011311

Security seal, mm 120 string, unrepeatable progressive numeration.

Technical features

Material: Nylon 6

String length: 110 mm

➤ DG011310A

NEW ASKIR 30

Portable suction unit

NEW ASKIR 30 is a desk-type electric suction unit suitable for nasal, oral and endotracheal aspiration of body fluids (mucus or catarrh) from adults and children. Suitable for tracheotomized patients, minor surgical applications, and post-operative therapy in homecare. Main unit equipped with vacuum-meter (bar & kPa) and vacuum regulator.

Complies with EN 60601-1-11 "for use in the home healthcare environment" and carries IP21 degree of protection

Available configurations

- 1000 ml autoclavable jar in polycarbonate
- 2000 ml autoclavable jar in polycarbonate with FLOVAC® Disposable Liners:
- 1000ml Flovac® disposable liner and reusable container
- 2000ml Flovac® disposable liner and reusable container
- Jars in APEC® autoclavable up to 143°C available upon request

Included accessories

- Liquid Collection Jar with overflow valve system (different options, see below)
- 6x10 Silicone Tubes (autoclavable) + Conical Connector ø 8-9- 10mm
- Antibacterial & Hydrophobic Filter (single-patient)
- CH20 Canula
- Power Cord with Schuko plug

Technical features

Dimensions: 35x21x18 cm

Weight: 3,6 Kg

Motor: Pompa a pistone a secco

Power supply: 230V-50 Hz

ISO 10079-1 Classification: High vacuum / High flow

Max suction (adjustable): -0.80 Bar -80kPa - 600 mmHg

Noise: 60,5 dB

Free air flow: 40 l/min

Power consumption: 110 VA

Fuse: 1 xF1,6 A 250 V

Operation: : Continuo

Degree of protection: IP21

Warranty: : 2 years



➤ DG011310B

ASKIR 36BR

Portable suction unit

ASKIR 36 BR is a portable suction unit for the aspiration of body liquids, oral, nasal and tracheal aspiration in adults or children. For professional use and with a powerful aspiration of max 36 l/min, ASKIR 36BR is lightweight for easy transport. Three different options for operation: AC/DC adapter, rechargeable battery and 12V car cigarettes lighter makes it a versatile suction unit approved for NON-STOP operation without overheating. Provided with visual and acoustic alarm indicating battery level, the main unit is also equipped with vacuum-meter (bar & kPa) and vacuum regulator. Carries IP21 degree of protection and complies with EN 60601-1-11 "for use in the home healthcare environment".

Available configurations

- 1000 ml autoclavable jar in polycarbonate
- 2000 ml autoclavable jar in polycarbonate
- with FLOVAC® Disposable Liners:
- 1000ml Flovac® disposable liner and reusable container
- 2000ml Flovac® disposable liner and reusable container
- Jars in APEC® autoclavable up to 143°C available upon request

Included accessories

- 8x14 mm Silicone Tubes (autoclavable) + Conical Connector ø 10-11-12mm
- Antibacterial & Hydrophobic Filter (single-patient)
- CH20 Cannula
- AC/DC Universal Adapter Alimentatore universale AC/DC

Technical features

Dimensions: 35x21x18 cm

Weight: 4,39 Kg

Motor: Membrane Pump. Duty cycle: Non-stop operation

Power Feeding: 14V 4A with AC/DC Universal Adapter mod. UE60- 140429SPA3 (100-240V~ - 50/60Hz - 100VA) Internal Rechargeable Pb Battery (12V 4A)

Autonomy: 60 min

Recharging Time: 240 minutes

ISO 10079-1 Classification: High vacuum / High flow

Max Vacuum (adjustable) -0.80 Bar -80kPa - 600 mmHg

Noise level: 65,5 dBA (with jar) / 68,5 dBA (without jar)

Max free air flow rate: 36 l/min

Power consumption: 110 VA, Fuse: 1 x F1,6 A 250 V

Protection Code: IP21

Warranty: 2 years



Notes

[illegible]

[illegible]



BioMatrix

Via Maffini, 23 • 29010 San Giuliano di Castelvetro (PC)
Tel. 0523.826619 • Fax 0523.826728 • e-mail: info@biomatrix.it

All rights reserved. Changes may be made without prior notice. BioMatrix S.r.l has not to be considered responsible for damages resulting from the lack or inaccuracy of the information reported here.